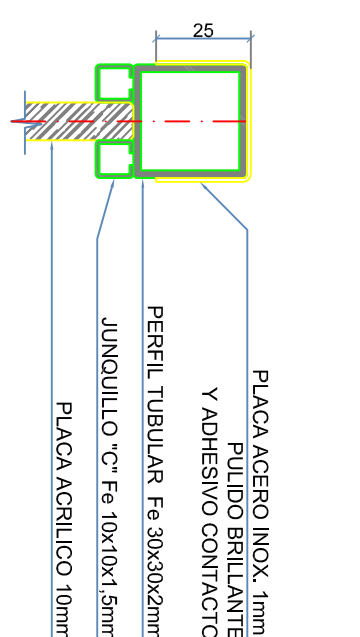
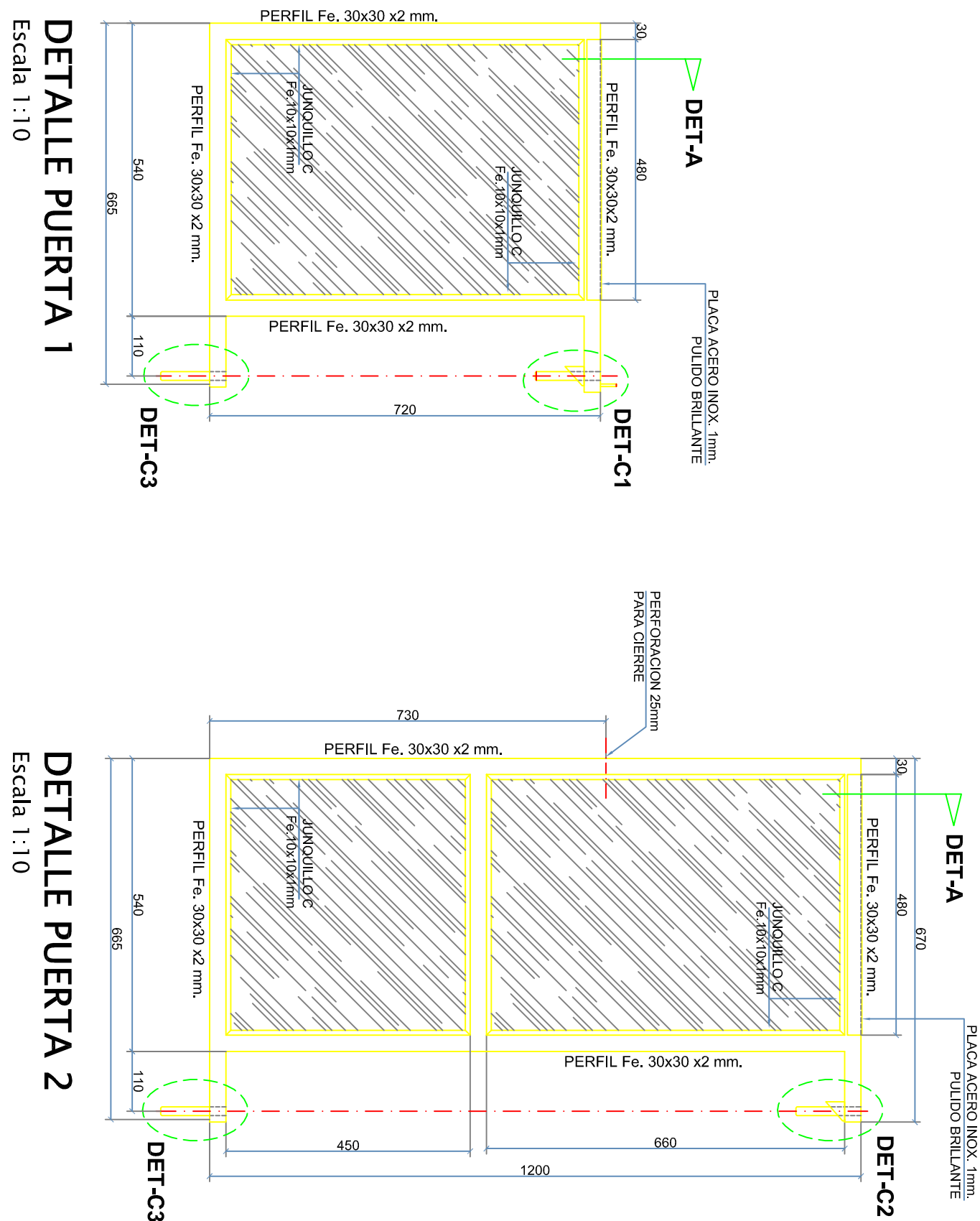
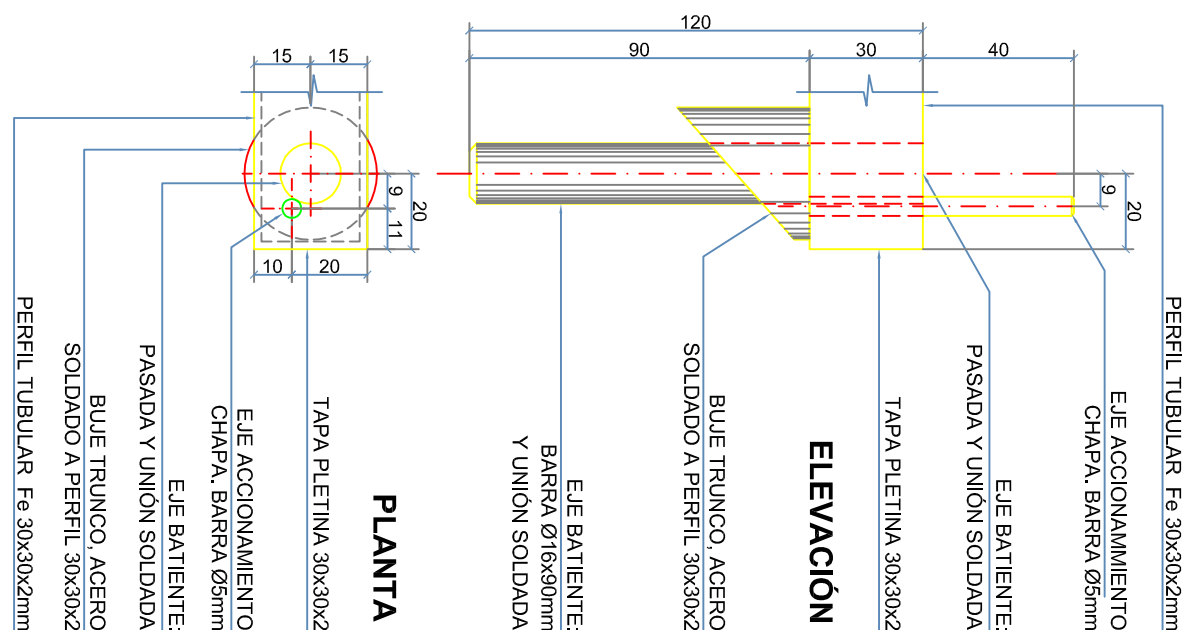


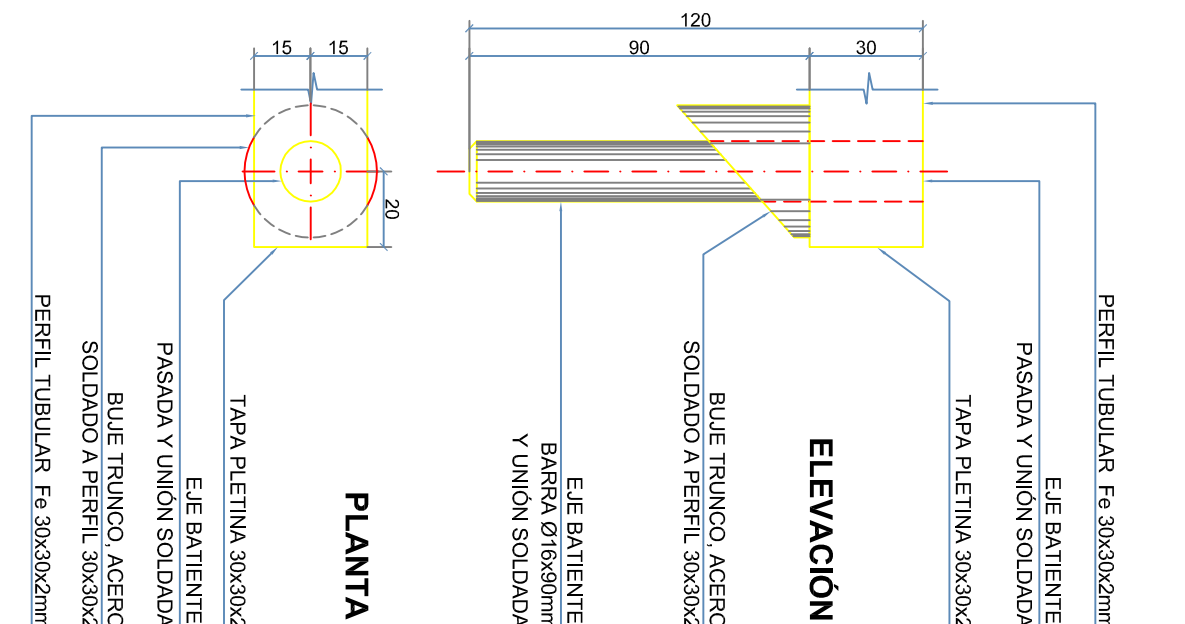
## PUERTAS TIPO



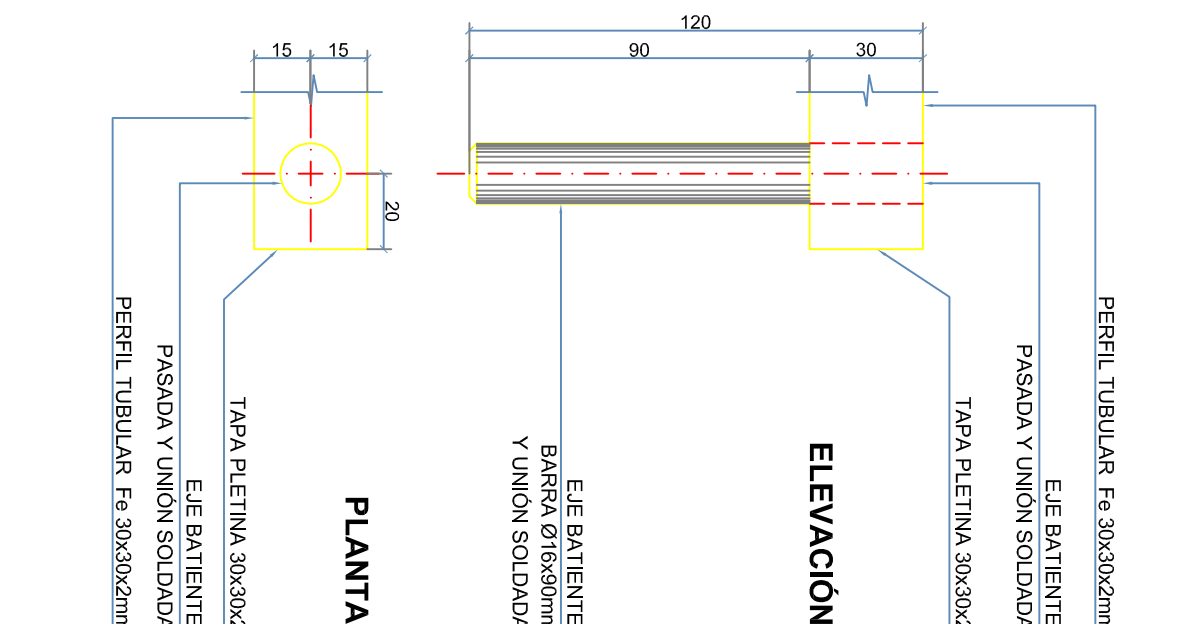
**DETALLE - A**  
Escala 1 : 2



**DETALLE - C1 TIPO:  
CIERRE POR GRAVEDAD**  
Escala 1:2

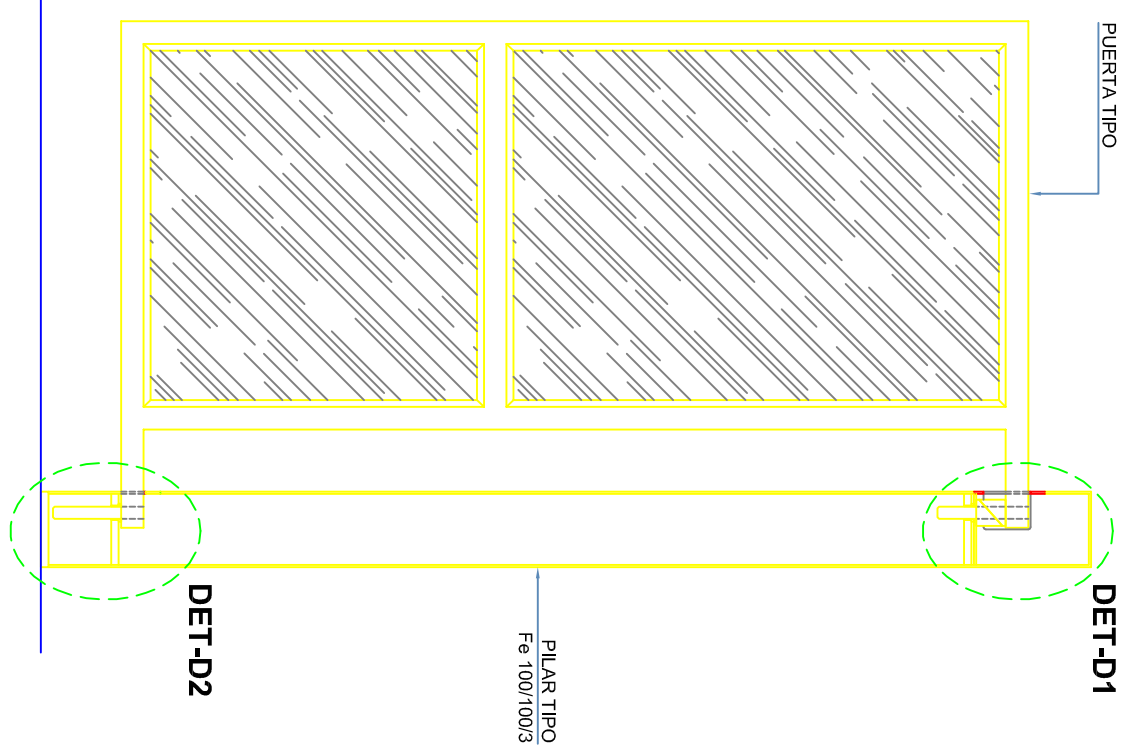


**DETALLE - C2 TIPO:  
CIERRE POR GRAVEDAD**  
Escala 1:2

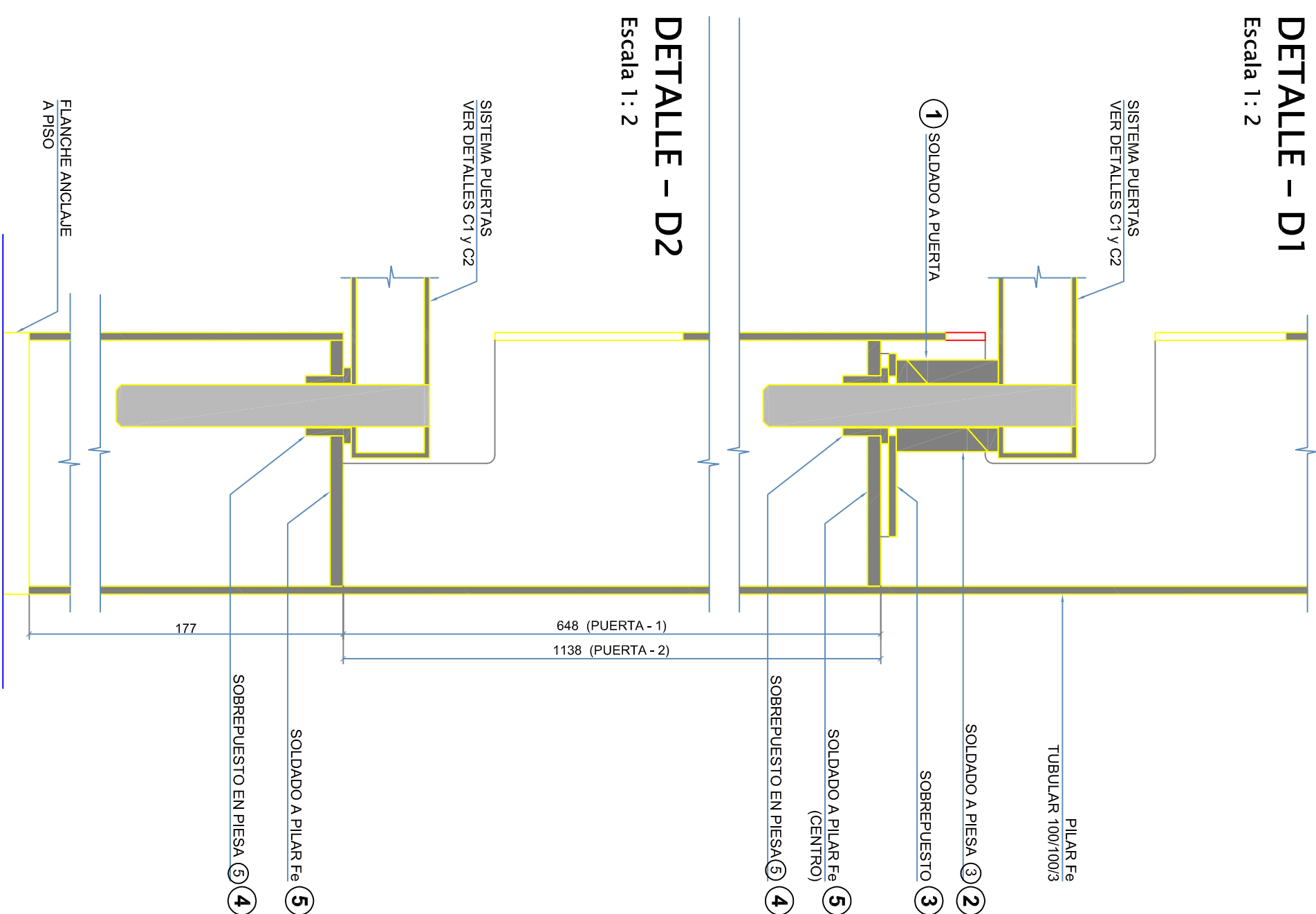


**DETALLE - C3 TIPO**  
Escala 1:2

## SISTEMA DE CIERRE POR GRAVEDAD

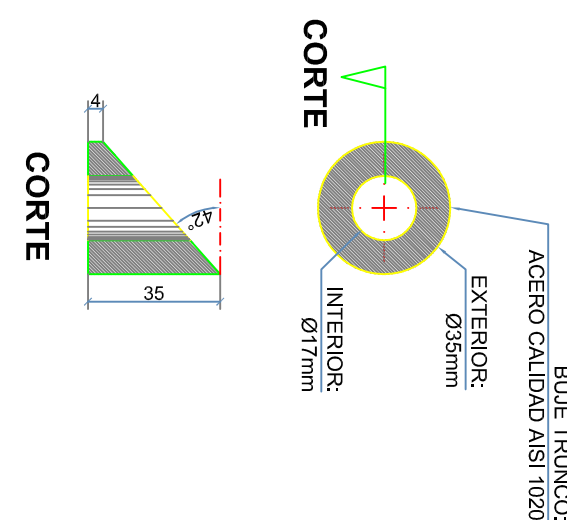


**SITUACIÓN TIPO:  
PUERTA Y PILAR**  
Escala 1:10

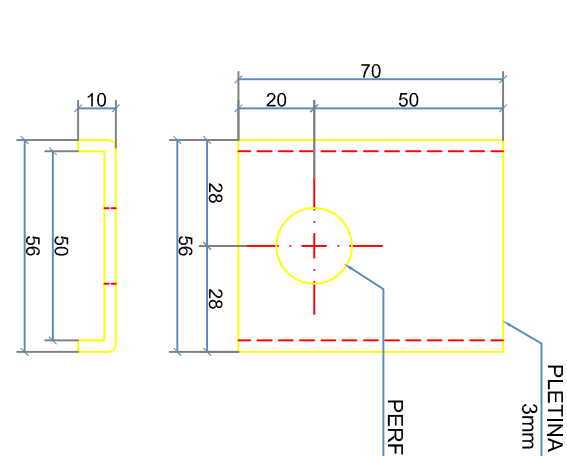


**PLANTA**  
Escala 1 : 2

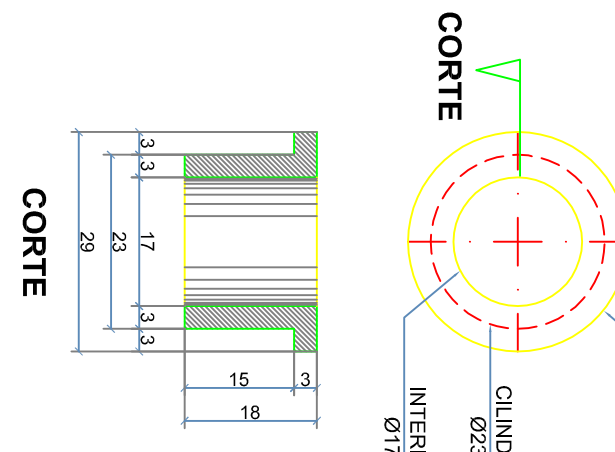
PILAR Fc  
TUBULAR 100x100/3  
SOLDADO A PLAR Fc (CENTRO)  
PROYECCION PIEZA SOBRENUEVAMENTO



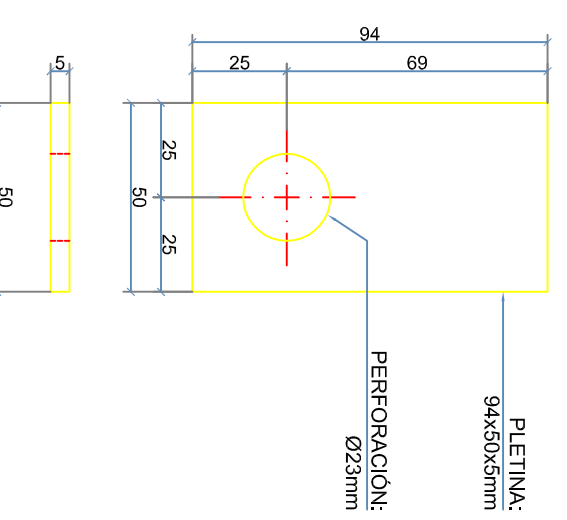
**1 y 2**  
**DETALLE BUJE TRUNCO**  
Escala 1 : 2



**DETALLE**  
**PLETINA PLEGADA**  
Escala 1 : 2



4  
**DETALLE BUJE BRONCE**  
Escala 1 : 1



5  
**DETALLE PLETINA BASE**  
 Escala 1 : 2

[illegible]

METRO S.A.



Contrato N

## SISTEMA TIPO

ONALES

PUERTAS TIPO : PLANTAS - CORTES - DETALLES

<p>             1. <b>Identify the main idea of the passage.</b>              2. <b>Identify the supporting details.</b>              3. <b>Identify the author's purpose.</b>              4. <b>Identify the author's tone.</b>              5. <b>Identify the author's bias.</b>              6. <b>Identify the author's point of view.</b>              7. <b>Identify the author's audience.</b>              8. <b>Identify the author's style.</b>              9. <b>Identify the author's language.</b>              10. <b>Identify the author's structure.</b> </p>	<p>             1. <b>Identify the main idea of the passage.</b>              2. <b>Identify the supporting details.</b>              3. <b>Identify the author's purpose.</b>              4. <b>Identify the author's tone.</b>              5. <b>Identify the author's bias.</b>              6. <b>Identify the author's point of view.</b>              7. <b>Identify the author's audience.</b>              8. <b>Identify the author's style.</b>              9. <b>Identify the author's language.</b>              10. <b>Identify the author's structure.</b> </p>
--	--

1/3 